



Trauma Education: a Multidisciplinary Interface

Chris Clarke

Clinical Nurse - Trauma Service

Royal Adelaide Hospital

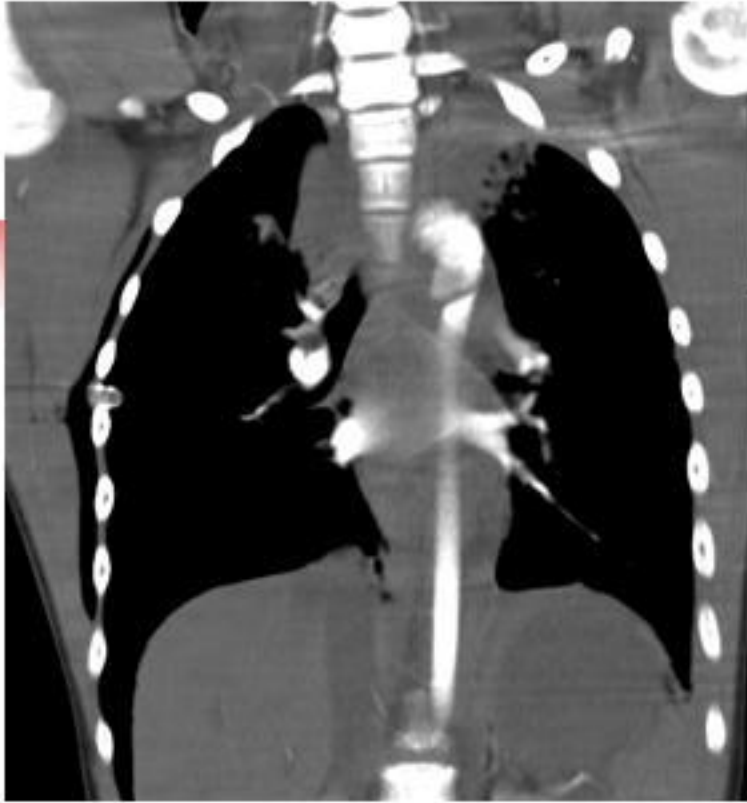
(Injury 2005 - Auckland, NZ. 4th - 5th August 2005)



The Nature of Work in the Emergency Department

- Large departments have or require a great number of staff.
- High turn-over of staff - both nursing and medical (?? Allied health).
- Trauma management seems to be "popular" - more staff interested.
- Unusual pathology.

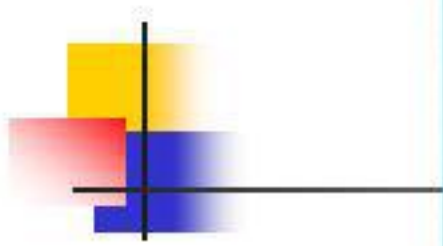






Junior Staff in Resuscitation Roles

- Staff shortages in health care in general - both nursing and medical.
- Hence the necessity for staff to participate in middle level, or senior roles.
- Mentorship and supervision must be adhered to.



KODAK LANCET METHOD 934029 L

H. J. SIMPSON



On the Spot Teaching

- Trauma resuscitations can form a basis of teaching for staff.
- During the event or as part of a debrief.
- Provides a form of closure for all staff involved.

New Equipment (or old equipment)





Updated/New Trauma Protocols.

- Use of Factor VIIa in trauma.
- Penetrating trauma - increased incidence.
- The use of the open abdomen in trauma laparotomy.



How many of
you comprehend
the term
"follicular"?

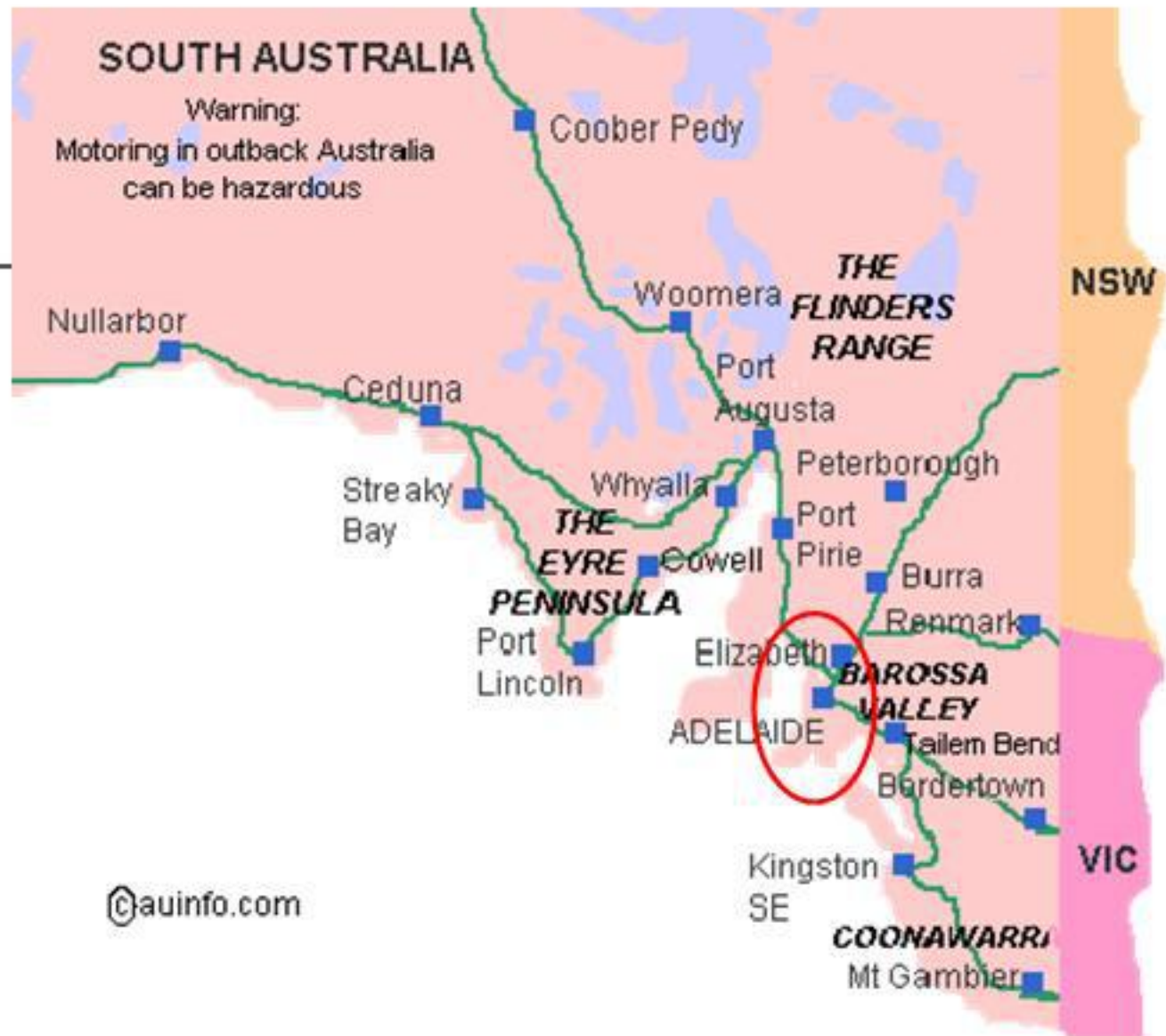
What does
"comprehend"
mean?



Trauma Service Weekly Audit

- Review of all trauma call presentations from the previous week.
- Informal – acts as a teaching session.
- Trauma Service Staff, ED Staff, Radiology, Social Work, SAAS.







Trauma/ED Quality Improvement Session

- Trauma participation once per month.
- All ED staff attend on a regular basis.
- Modified M and M.
- Case presentations.
- New protocols.
- New equipment.

EMST

- 4 nurse observers.
- 4 nursing students or medical students, or ambulance personnel.
- 16 participants.
- **Nurses very enthusiastic to participate.**



Clinical Lectureship at a University Level



Trauma Teaching Rounds



CTMW





Overview

- Education of staff must reflect system in which they work.
- Continuous quality improvement.
- Continuum of needs must be remembered.

DR. DIDD

I can assure you that despite the recent set backs, the government is still fully committed to a digital future





In the Future...

- Formal university level qualifications in trauma nursing (? Grad Cert)
- Combined trauma team competencies.
- More Trauma Team training at all levels.

Questions

- cclarke@mail.rah.sa.gov.au







25 10 2002



The Royal Adelaide Hospital

- 650 bed tertiary referral hospital located in the centre of Adelaide.
- Major teaching hospital for the University of Adelaide.
- Nursing and Medical education.



The Royal Adelaide Hospital

- Major Trauma Center for South Australia
- Treats over 1600 major trauma cases per year
- Has the following specialties:
 - cardiothoracic
 - neurosurgical
 - orthopaedic
 - burns
 - spinal injuries
 - hyperbaric medicine
- The Burns, Spinal and Hyperbaric units are the sole referral units for SA and the NT.
- New ED opened May 2003 - 4 resuscitation rooms and 46 patient care cubicles.







**So why is multidisciplinary
trauma education important?**

