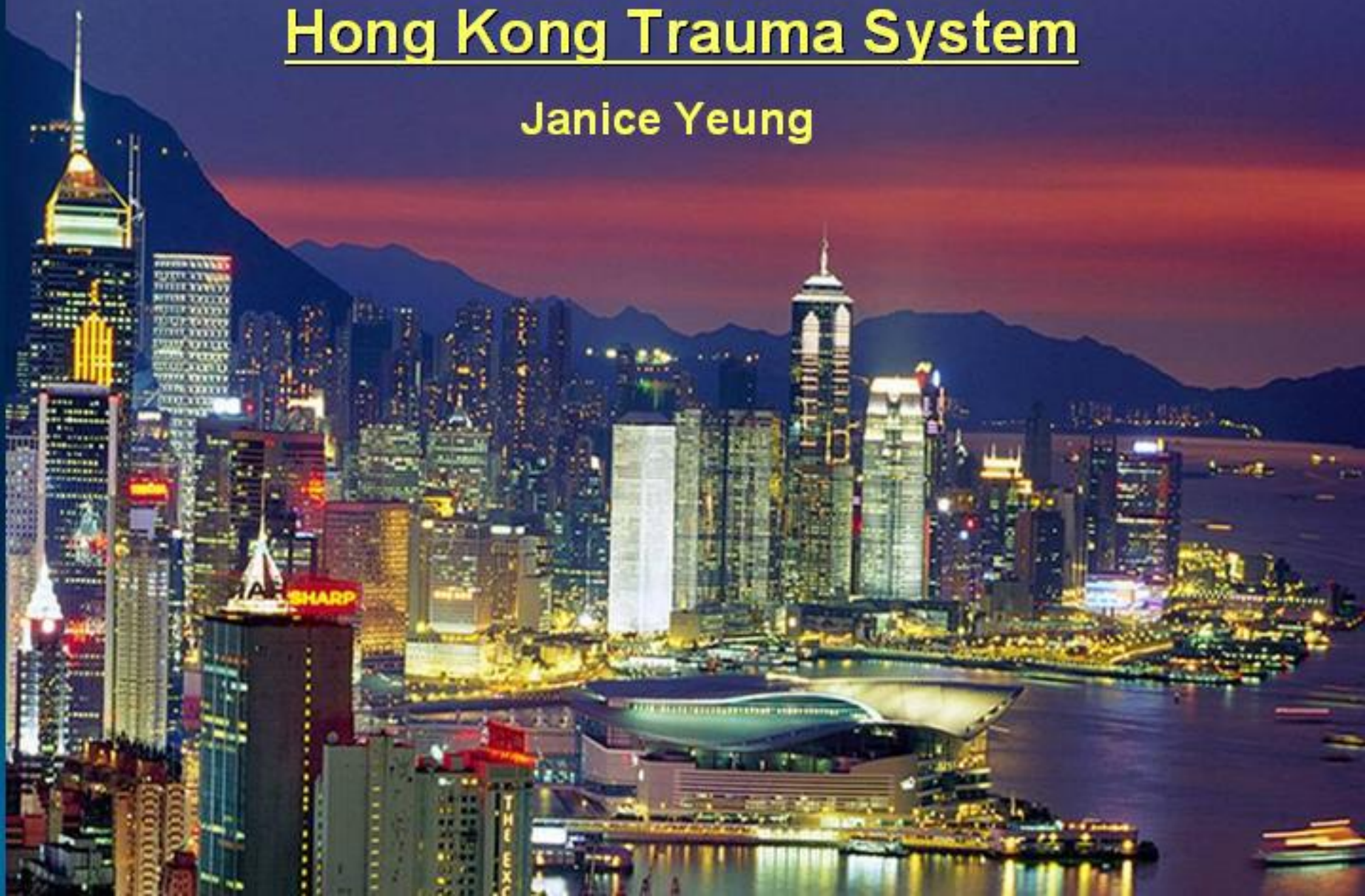


Hong Kong Trauma System

Janice Yeung







Prince of Wales Hospital

➤ All necessary specialties on site:

- ICU & Anaesthesia
- Surgery
- Orthopaedic surgery
- Neurosurgery
- Paediatric surgery
- Cardiothoracic surgery
- Burns & plastic surgery

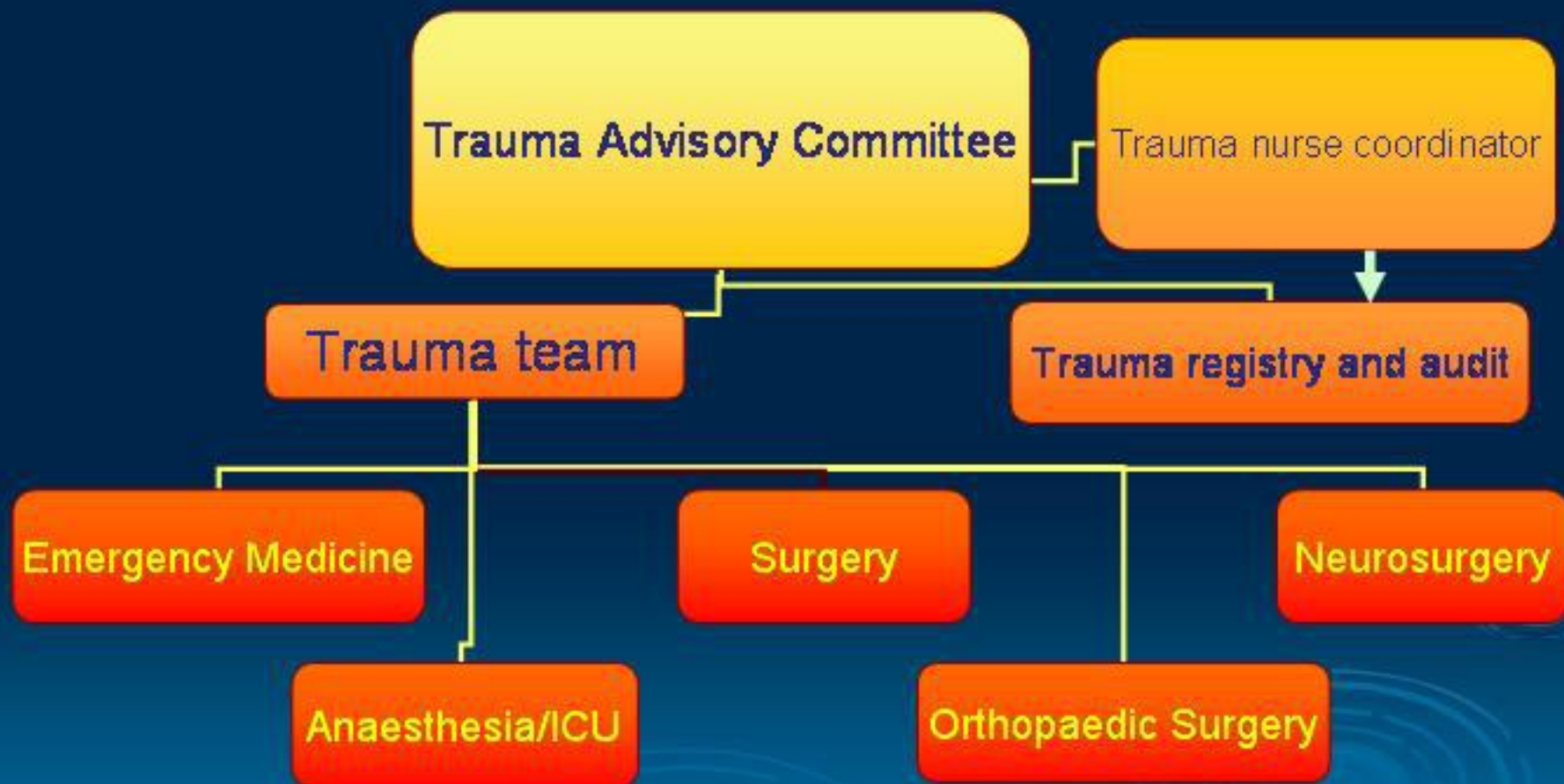


PWH Trauma Room





Trauma Advisory Committee





Trauma Team



Trauma Team Leader

Nursing Team Leader

Airway Nurse

Procedure Nurse

Circulation Nurse

Surgical 2nd Call

Surgical 1st Call

ICU

Orthopaedic

Emergency Medicine Trainee



Trauma nurse coordinator

➤ Remit:

- To educate staff of all disciplines on trauma management
- To provide a clinical leadership role in the trauma room and help overall coordination of cases
- To follow up trauma cases throughout the hospital
- To establish a trauma audit system through the creation of a trauma registry



Initial results

- Trauma system operational since December 2000
- 610 patients with ISS>15 treated up to Jun 2005
- 30 patients per calendar month assessed and treated by the trauma system
- 87.4% of trauma patients admitted to ICU have an ISS>15
- 83.7% of ICU admission had urgent surgery



Trend of W Score





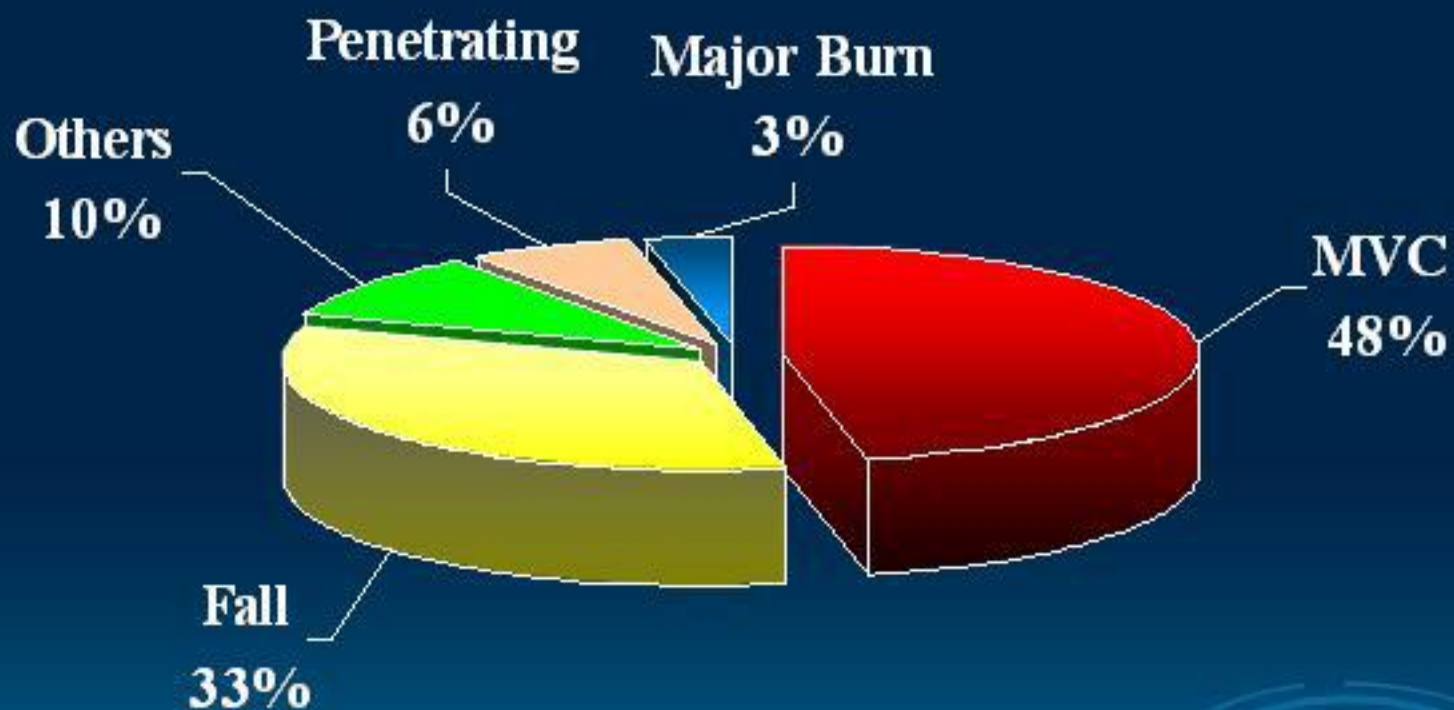
Acknowledgements

- AADO: Asian Association for Dynamic Osteosynthesis
- PWH: Prince of Wales Hospital, Hospital Authority
- CUHK: The Chinese University of Hong Kong



Questions?







Background

- Like most developed areas of the world, trauma is a major cause of death in Hong Kong, especially in the under 40 years age group
- Until 1995, trauma was not considered a significant health care problem in Hong Kong
- The Trunkey Report of 1994 suggested the development of a trauma system and the designation of trauma centres



Trauma Centres

- Hong Kong is divided into 'hospital clusters'
- 5 trauma centres in different clusters
- All of them are public hospitals
- 2 of them are university teaching hospitals



“Commitment is 90% of a trauma system, 10% is physical resources”



Current developments

- Primary trauma diversion has started from Nov 2003
- Preliminary results suggest:
 - Manageable impact on workload – 2 extra patients per week
 - Saving of 89 minutes from time of injury to definitive care
- Now being extended and further options are being considered

Distribution of Public Hospitals and Institutions

公立醫院及機構的分布

HONG KONG WEST 港島西

- 1 Duchess of Kent Children's Hospital at Sandy Bay 次口羅維德公爵夫人兒童醫院
- 2 MacLehose Medical Rehabilitation Centre 麥理浩復康院
- 3 Queen Mary Hospital 瑪麗醫院
- 4 Tuen Yick Hospital 屯門醫院
- 5 Tung Wah Group of Hospitals Fung Yiu King Hospital 東華三院馮耀光醫院
- 6 Tung Wah Hospital 東華醫院
- 7 Grantham Hospital 葛量洪醫院

HONG KONG EAST 港島東

- 8 Cheung Yee Nam, Chung Hom Kuk 香港內康氏護理院
- 9 Pamela Youde Nethersole Eastern Hospital 東區尤德夫人那打東醫院
- 10 Ruttonjee & Tung Shu Kai Hospital 律敦治醫院及譚壽棠醫院
- 11 St. John Hospital 聖約翰醫院
- 12 Tung Wah Eastern Hospital 東華東院
- 13 Wong Chuk Hang Hospital 黃竹坑醫院

KOWLOON CENTRAL 九龍中

- 14 Hong Kong Buddhist Hospital 香港佛教醫院
- 15 Kowloon Hospital 九龍醫院
- 16 Queen Elizabeth Hospital 伊利沙伯醫院
- 17 Hong Kong Red Cross Blood Transfusion Service 香港紅十字會輸血服務中心
- 18 Hong Kong Eye Hospital 香港眼科醫院
- 19 Richard Cross 韋廉士中心

KOWLOON WEST 九龍西

- 20 Kwong Wah Hospital 廣華醫院
- 21 Our Lady of Maryknoll Hospital 瑪利醫院
- 22 Tung Wah Group of Hospitals - Wing Tai Ho Hospital 東華三院黃大仙醫院
- 23 Caritas Medical Centre 明愛醫院
- 24 Kwai Chung Hospital 葵涌醫院
- 25 Princess Margaret Hospital 瑪嘉烈醫院
- 26 Yan Chai Hospital 仁濟醫院

KOWLOON EAST 九龍東

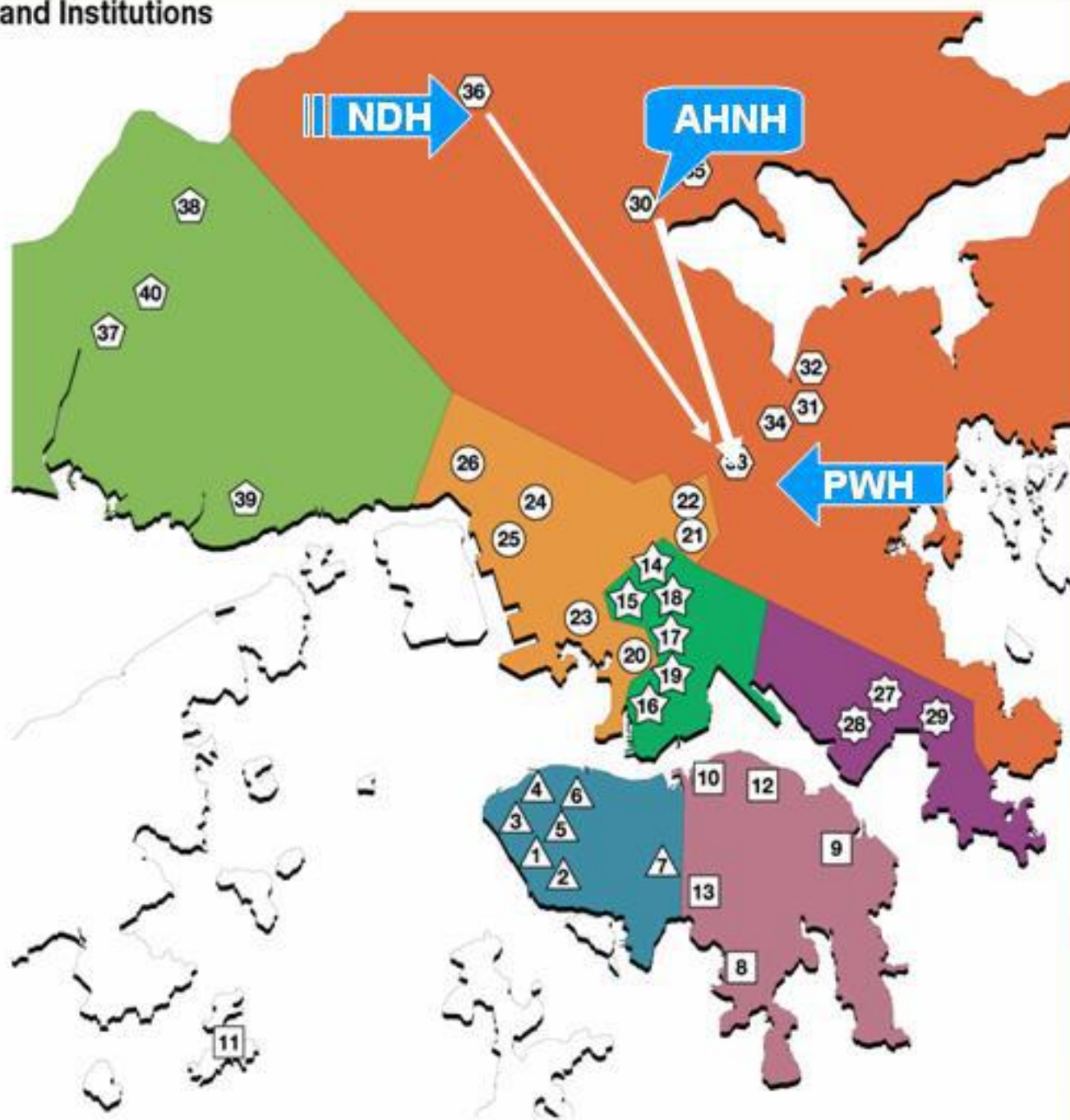
- 27 Haven of Hope Hospital 靈實醫院
- 28 United Christian Hospital 基督教聯合醫院
- 29 Tsung Kwan O Hospital 將軍澳醫院

NEW TERRITORIES EAST 新界東

- 30 Alice Ho Miu Ling Nethersole Hospital 羅麗氏何妙齡新行康醫院
- 31 Bradbury Hospice 白普康寧中心
- 32 Christie Home, Shatin 沙田康氏護理院
- 33 Prince of Wales Hospital 威爾斯親王醫院
- 34 Shatin Hospital 沙田醫院
- 35 Tai Po Hospital 大埔醫院
- 36 North District Hospital 北區醫院

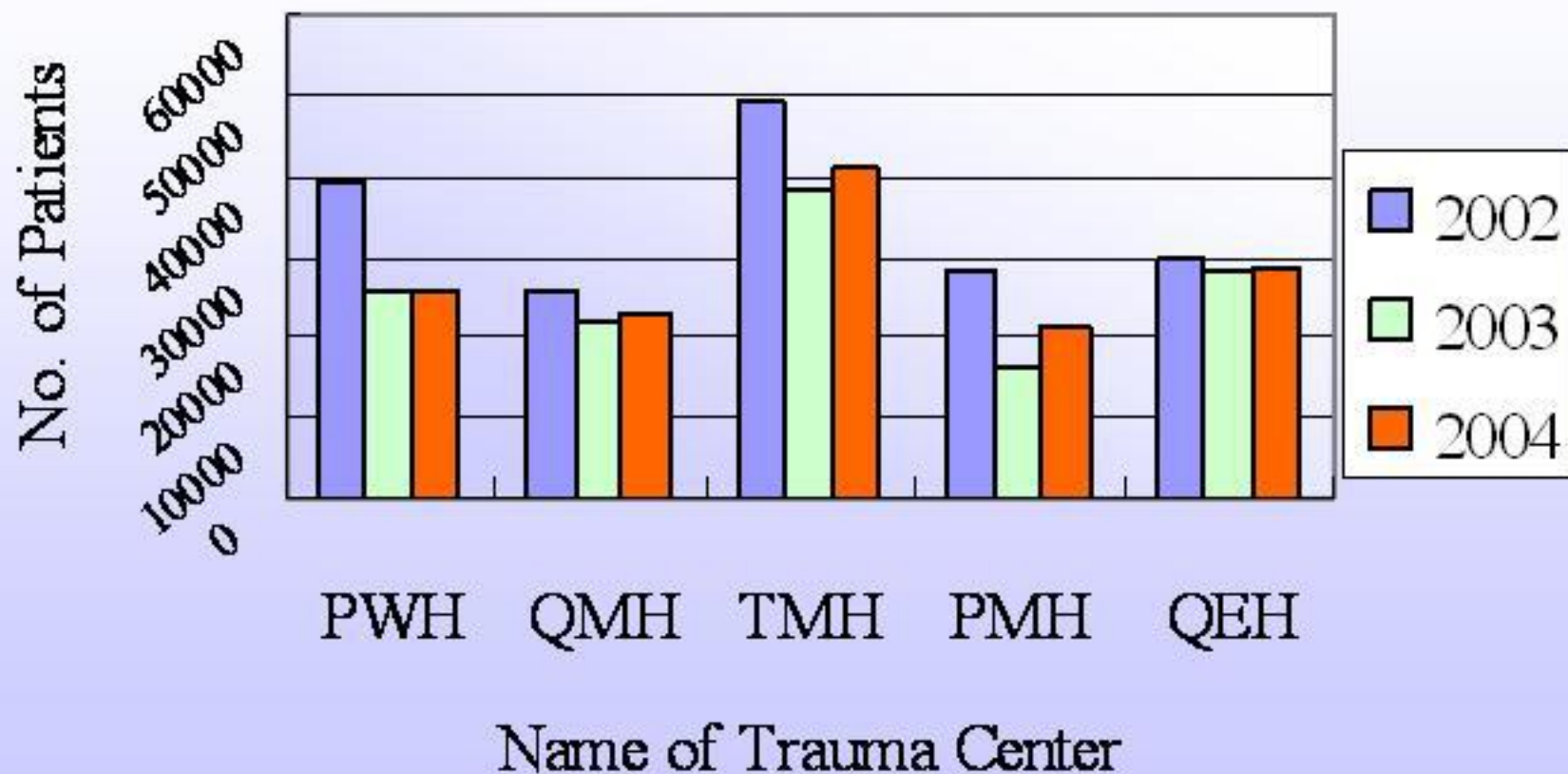
NEW TERRITORIES WEST 新界西

- 37 Castle Peak Hospital 青山醫院
- 38 Pak Oi Hospital 博愛醫院
- 39 Yiu Lam Hospital 小欖醫院
- 40 Tuen Mun Hospital 屯門醫院





Trauma Attendance in ED





Prince of Wales Hospital

- Hub of the NTEC trauma system
- ~1200 beds in the hospital
- Major teaching hospital of CUHK
- Fully equipped trauma and emergency centre
- 24 hour emergency medicine specialist coverage