

# **Innovative Ways to Educate Surgeons in a Changing Time**

**Lenworth Jacobs, MD, MPH, FACS**

**Professor of Surgery**

**Chairman**

**Department of Traumatology  
and Emergency Medicine**

**University of Connecticut**

# **Experiential Learning**

**Time Based**

**Enhanced by Repetition**

**Mentor Driven**

# **Competence Based Learning**

**Curriculum Driven**

**Sequential Benchmarks**

**Verification of Competence**

# **Competence Based Learning**

**Progress at Learners Pace  
Must Pass Milestone to Continue  
Difficulty in Scheduling**

**Rotation Disruptions**

**Utilization of Simulation Experience:  
To Advance **or**  
To Remediate Performance**



# **Progress to Competence**

**Verification of Learning  
by Objective Evaluation  
Oral or Written Exams**

## **Technical Skill Validation**

**Simulation Lab  
Operating Room**

# Surgical Resident Training: Hours per Week

<b>United States</b>		<b>80 hours</b>	<b>Switzerland</b>		<b>50 hours</b>
<b>Canada</b>		<b>72 hours</b>	<b>The Netherlands</b>		<b>48 hours</b>
<b>Ireland</b>		<b>70 hours</b>	<b>Denmark</b>		<b>42 hours</b>
<b>Australia</b>		<b>68-75 hrs</b>	<b>Germany</b>		<b>40 hours</b>
<b>New Zealand</b>		<b>72 hours</b>	<b>Belgium</b>		<b>40 hours</b>
<b>Taiwan</b>		<b>70 hours</b>	<b>Sweden</b>		<b>40 hours</b>
<b>Brazil</b>		<b>60 hours</b>	<b>France</b>		<b>35 hours</b>
<b>Great Britain</b>		<b>54 hours</b>	<b>Norway</b>		<b>35 hours</b>

**Richard Resnik**





# **Simulated Education**

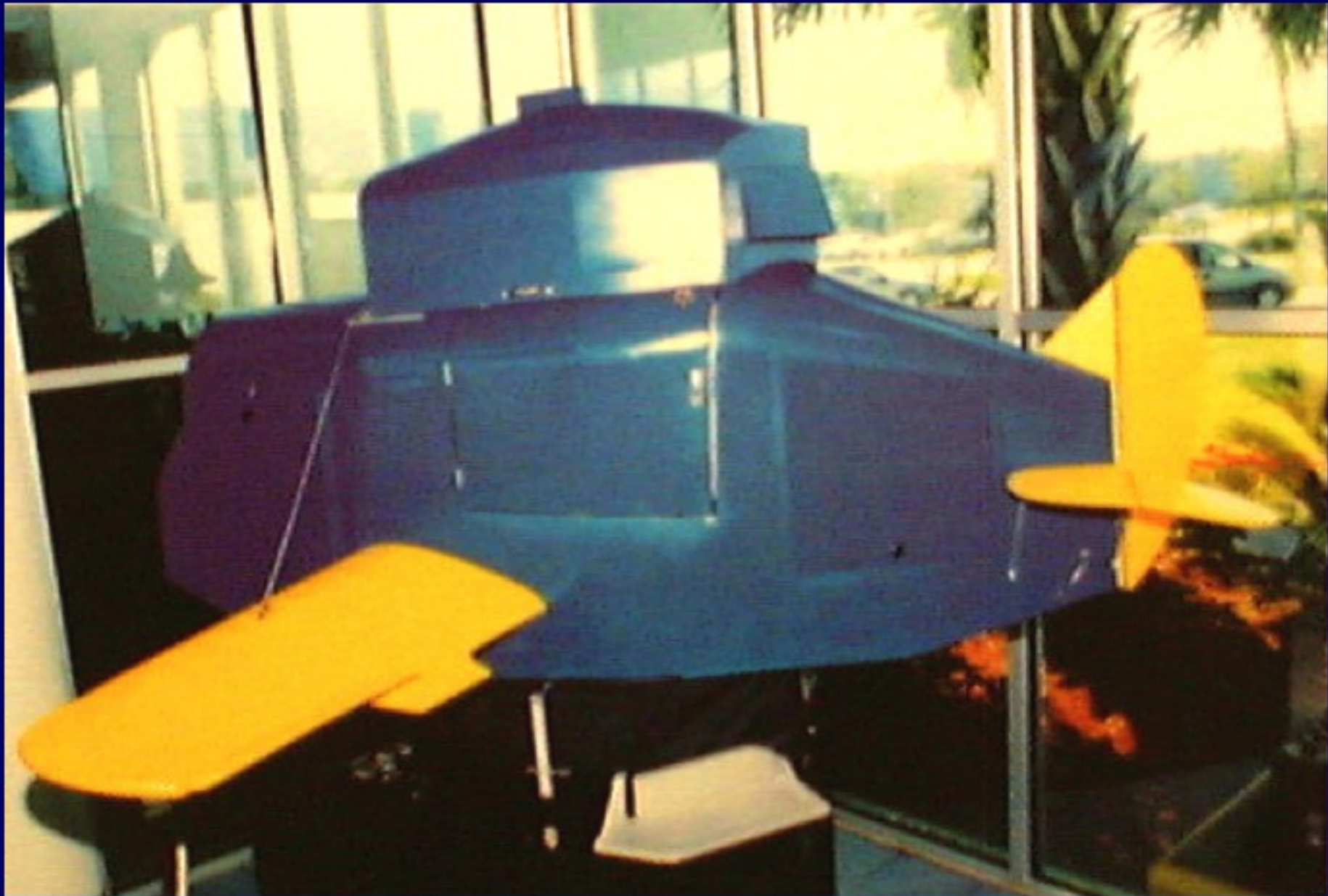
**Aviation**

**Psychomotor Skills**

**Cognitive Skills**

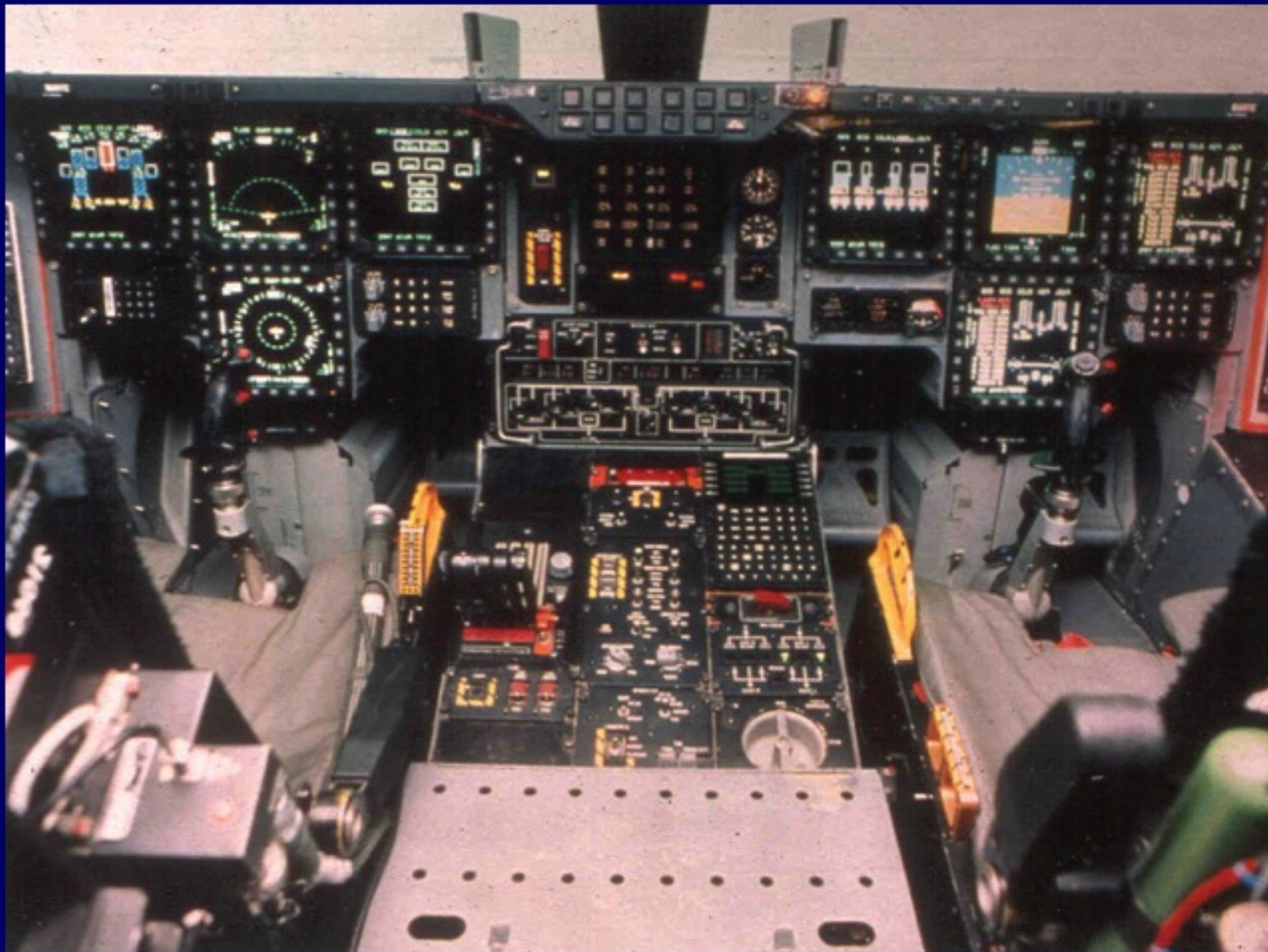
**Complex Decision  
Making**

# Link Trainer



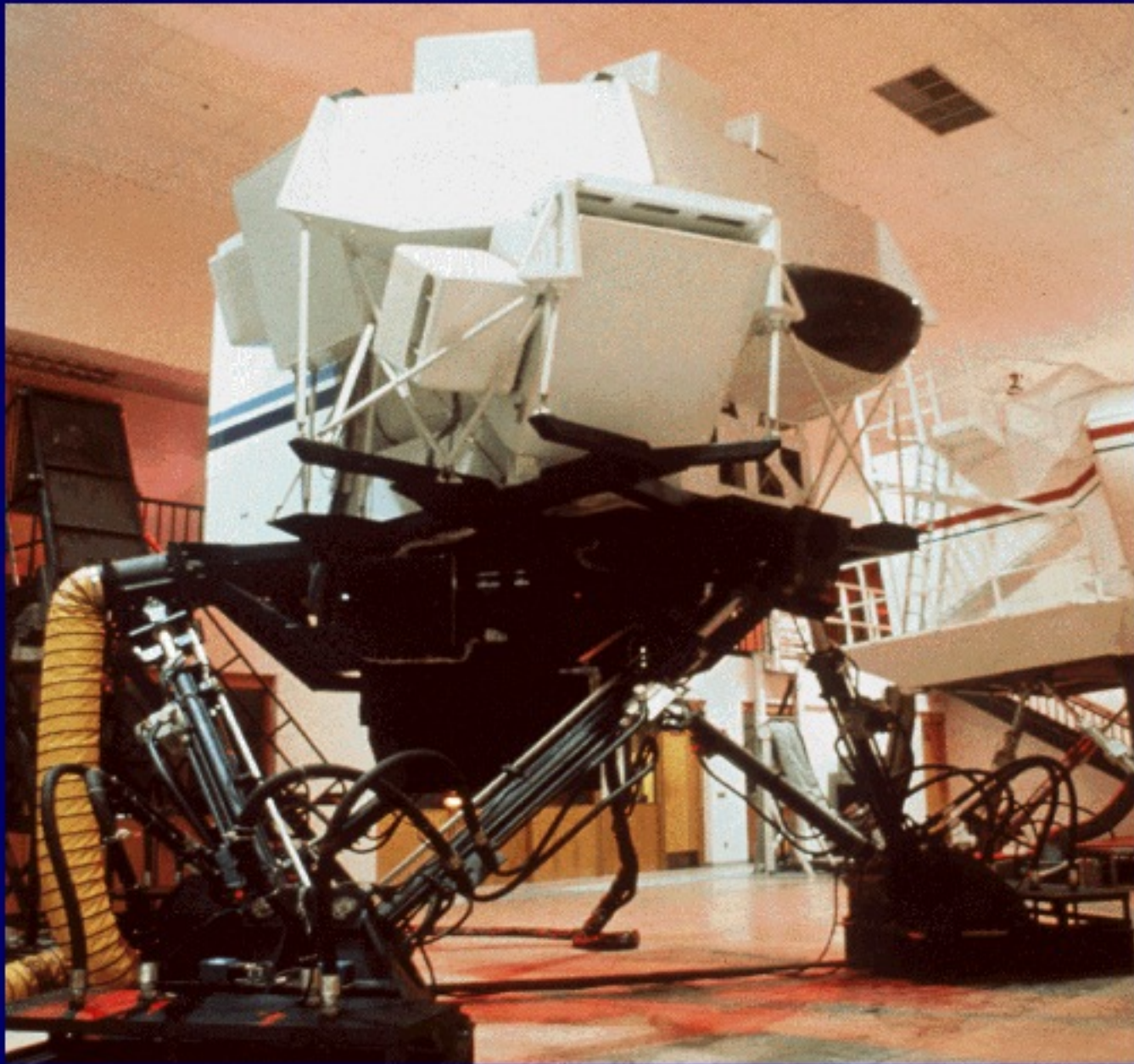


# Bomber Simulator





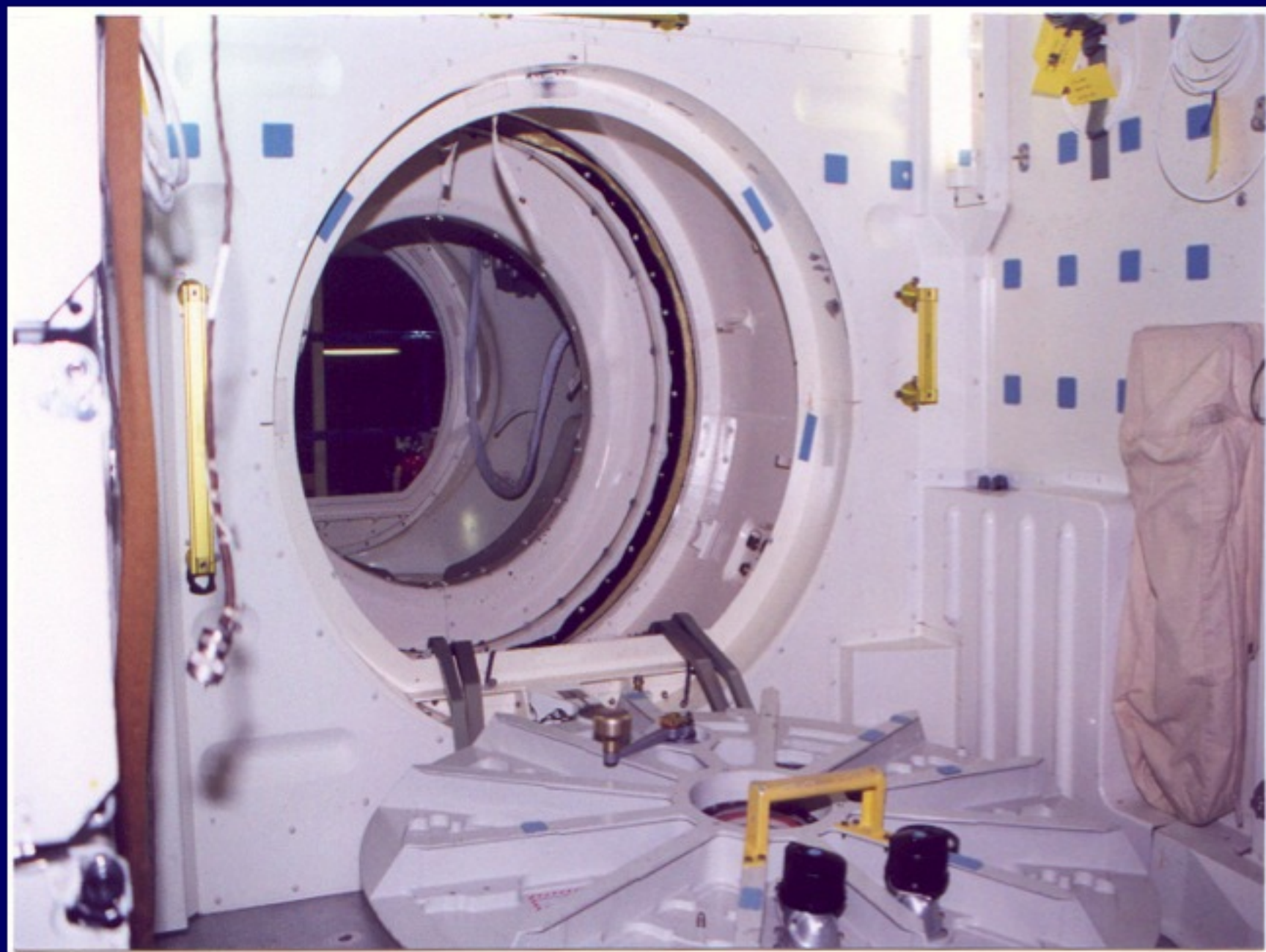
# PILOT TRAINING



# NASA Deep Space Probe







# Space Station











# **Simulation Laboratory**

**Static Skill Trainers**

**Dynamic Trainers**

**Bio Lab Experiences**

**Practice in the Lab**

**Perfect on the Patient**

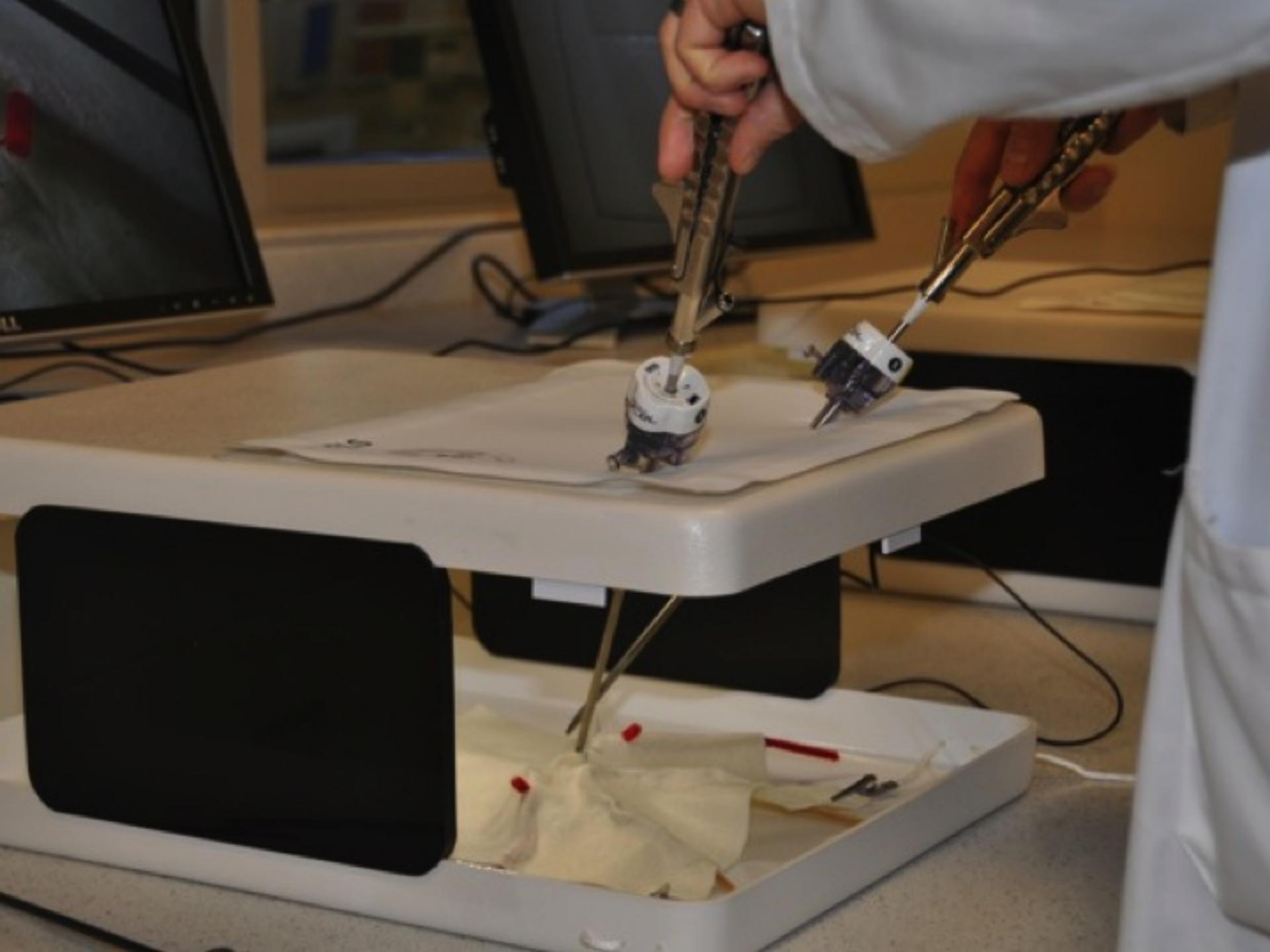






















# **DEVELOPING TRAUMA TEAM COMPETENCY**

- **Identify all components of a resuscitation**
- **Identify critical behaviors**
- **Establish tasks which must be successfully completed**
- **Develop timeline for completing each task**































# **Management of Surgical Airway**

**Severe neck laceration**

**Fractured larynx**

**Disrupted anatomy**





















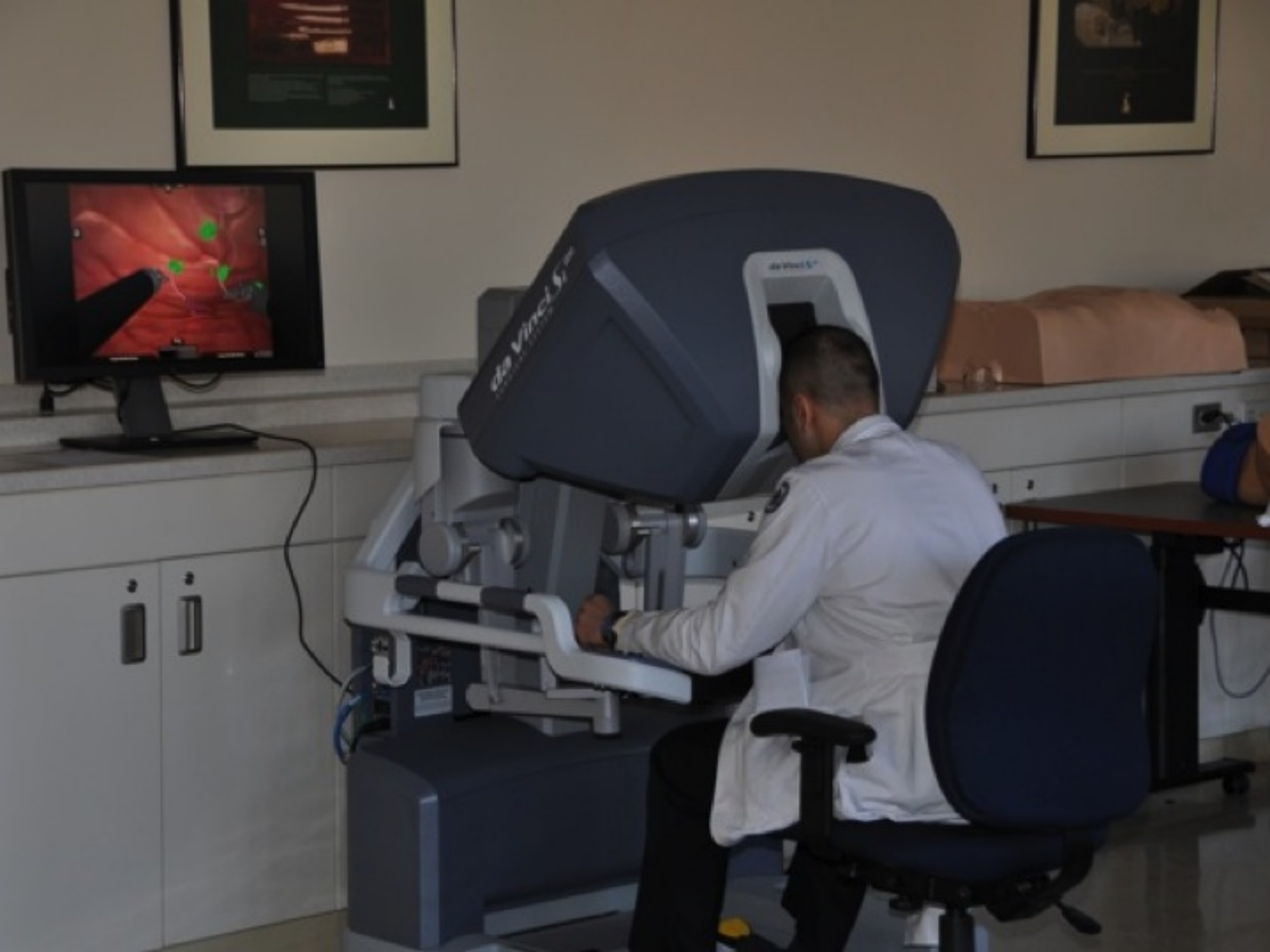




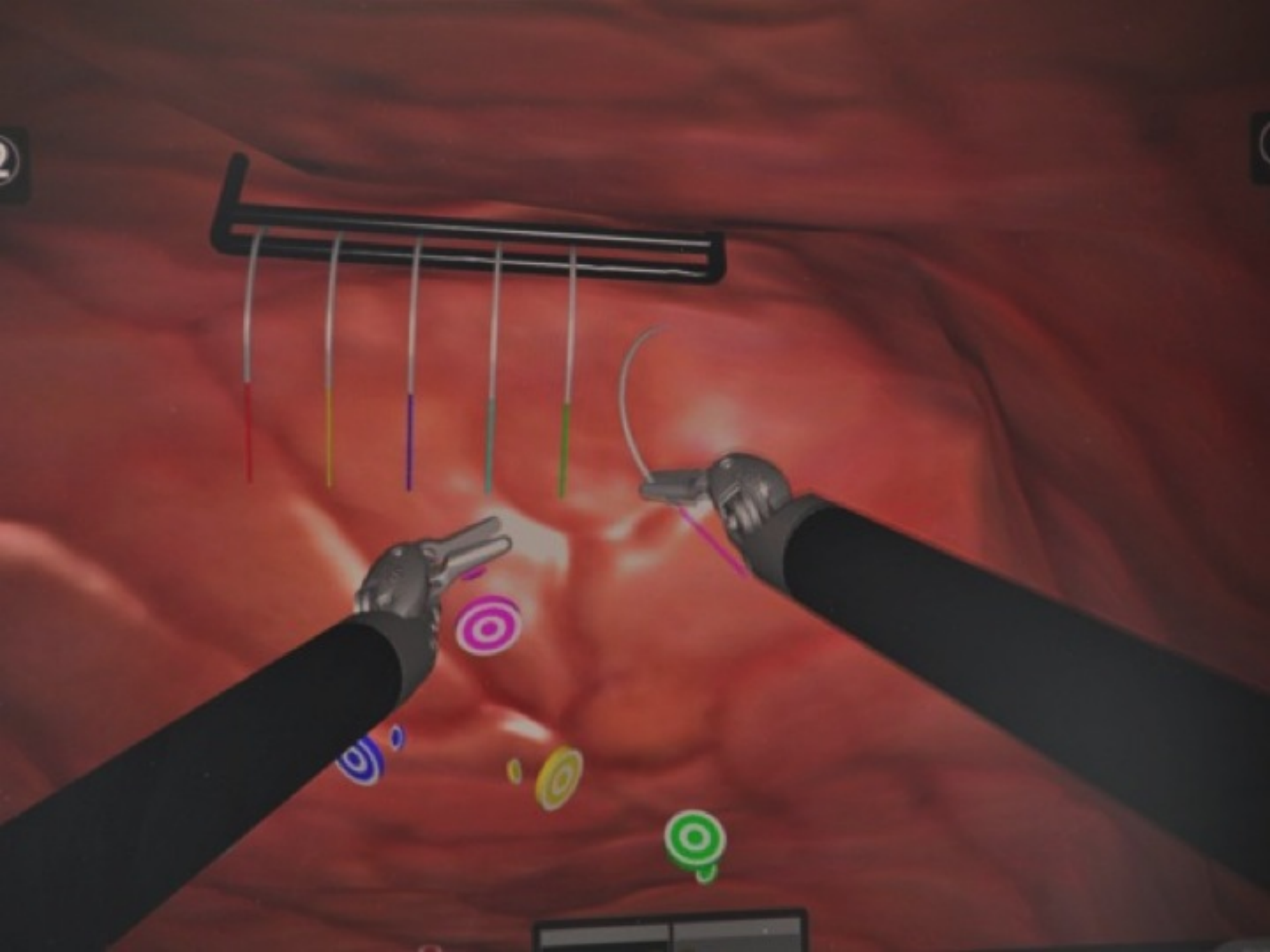




























INTUITIVE  
SURGICAL

0



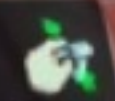
P1-8

Training instrument -- Not for human use

2

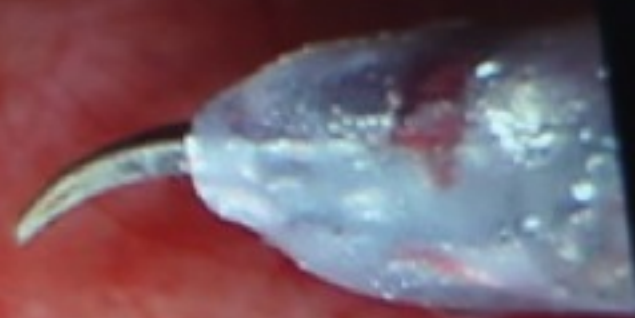


Move master grip  
to match  
instrument.



Mayerd Bipolar Forceps

3



Move master grip  
to match  
instrument.



Prograsp Forceps













# **Summary**

**Paradigm Shift**

**Practice in the Non Human  
Environment**

**Cognitive and Skill  
Verification**

**Team Performance**

**Use of Simulation**

**Safer, More Effective,  
Efficient**