

Acute Surgery in the UK

Peter Swan
fellow, HPB and transplant
Auckland City Hospital

Acute Surgery in the UK

Peter Swan
consultant, acute and general surgery
University Hospital Southampton

the acute surgical unit

assessment area

specific team

care pathways

interventional radiology

theatre

ICU

acute/emergency surgeons

the acute surgical unit

assessment area

specific team

care pathways

interventional radiology

theatre

ICU

acute/emergency surgeons

traditional model of acute care



CRACKS IN THE CONSENSUS 20-23

FRANCIS

"The guide is not the bible in terms of principles and values being more important in how we manage the health service"

"You could summarise the whole document in one sentence - we have lost the focus on caring"

"It is a reference point for what is going wrong and should not happen again"

"Whether Francis will be effective because the system says how what people are thinking"

"We have identified a problem which must be addressed"

"The good stuff tends to be very woolly and non-specific and apply to - the more specific he is, the less happy I am"

"If you are trying to change the culture, putting the flow of God into everyone is not necessarily the way"

"It is like seeing the right label on the door and when you open the door there is nothing there"

"The system says on the NHS constitution. The new majority don't know it exists"

Emergency Surgery

Standards for unscheduled surgical care

Guidance for providers, commissioners and service planners

February 2011



EMERGENCY
GENERAL SURGERY

May 2012

Association of Surgeons of Great Britain and Ireland

ISSUES IN PROFESSIONAL PRACTICE
Emergency General Surgery

Emergency Admissions: A journey in the right direction?

Executive Summary

A report of the National Confidential Enquiry into Patient Outcome and Death (NCEPOD)

EVERYONE COUNTS:
PLANNING FOR
PATIENTS 2013/14



Creating an Emergency General Surgery Service Enhances the Productivity of Trauma Surgeons, General Surgeons and the Hospital

Ma **Redefining the Future of Trauma Surgery**
Ad **as a Comprehensive Trauma and
Emergency General Surgery Service**

Patrick K Kim, MD, G Paul Debonchis, MD, FRCGS, Patrick M Bell, MD, FRCGS
Susan Auerbach, MHA, RHIA

MD,
and John A. Morris, MD

REVIEW ARTICLE

Acute Surgical a descriptive a

Li Hsee,* Marcelo Dev

*Acute Surgical Unit, Auckland

†Department of Surgery, Auckl

‡Trauma Services, Auckland Ci

World J Surg (2012) 36:2335–2340
DOI 10.1007/s00268-012-1670-5

Key Performance Indicators in an Acute Surgical Unit: Have We Made an Impact?

Li Hsee • Marcelo Devaud • Ian Civil



ANZJSurg.com

World Journal
of Surgery®

Southampton ASU

resource:

- 2 house officers
- 1 nurse specialist
- 1 RMO
- 1 registrar
- 3 consultant surgeons
 - 2 UGI
 - 1 general/endo

philosophy:

- consultant led
- consultant delivered
 - early review
 - early intervention
- acute theatre
- clinical pathways

consultant job-plan

| WEEK 1 | Mon | Tue | Wed | Thur | Fri | Sat | Sun |
|---------------|-----|-----|-----|------|-------|-----|-----|
| AM | | | | | | | |
| PM | | | | | AUDIT | | |
| O/N | | | | | | | |

| | |
|--|----------|
| | acutes |
| | CME |
| | elective |

| WEEK 2 | Mon | Tue | Wed | Thur | Fri | Sat | Sun |
|---------------|-----|-----|-----|------|-----|-----|-----|
| AM | | | | | | | |
| PM | | | | | | | |
| O/N | | | | | | | |

| WEEK 3 | Mon | Tue | Wed | Thur | Fri | Sat | Sun |
|---------------|-----|-----|-----|------|-----|-----|-----|
| AM | | | | | | | |
| PM | | | | | | | |
| O/N | | | | | | | |

Southampton ASU

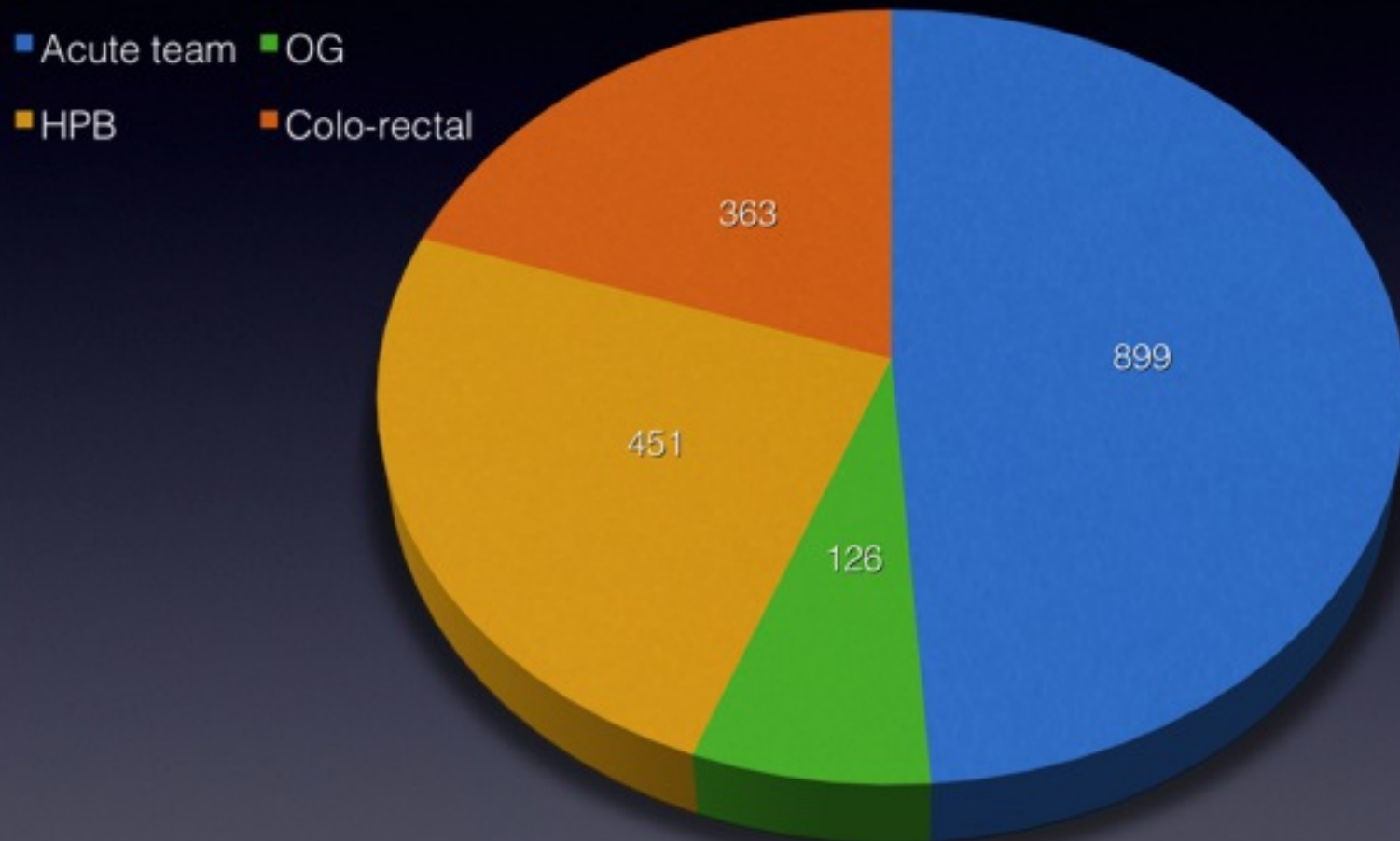
| WEEK 1 | Mon | Tue | Wed | Thur | Fri | Sat | Sun |
|--------|--------|--------|--------|--------|-------|---------|---------|
| AM | acutes | acutes | acutes | acutes | | 1 in 12 | 1 in 12 |
| PM | | | | | AUDIT | | |
| O/N | | | | | | | |

| |
|----------|
| acutes |
| CME |
| elective |

| WEEK 2 | Mon | Tue | Wed | Thur | Fri | Sat | Sun |
|--------|-----|--------|--------|--------|--------|-----|-----|
| AM | CME | acutes | acutes | acutes | acutes | | |
| PM | | | | | | | |
| O/N | | | | | | | |

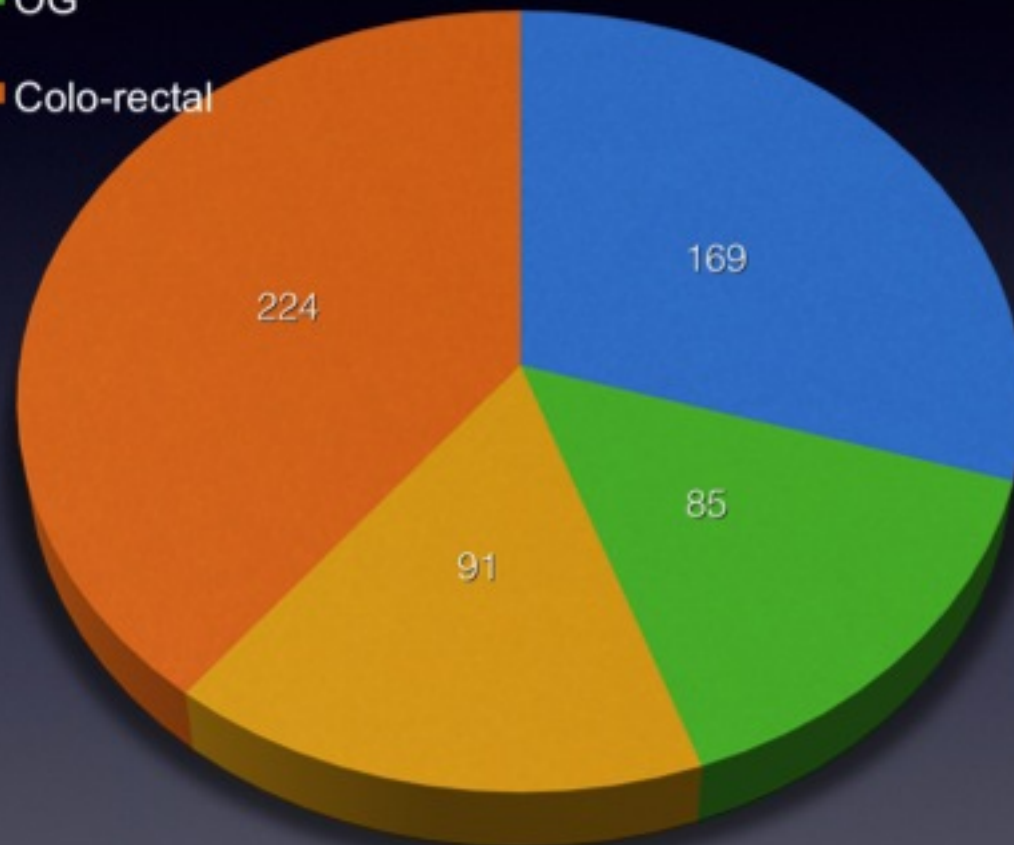
| WEEK 3 | Mon | Tue | Wed | Thur | Fri | Sat | Sun |
|--------|----------|----------|-----|------|--------|-----|-----|
| AM | elective | elective | CME | CME | acutes | | |
| PM | | | | | | | |
| O/N | | | | | | | |

Sub-specialty admissions Feb-Mar 2013

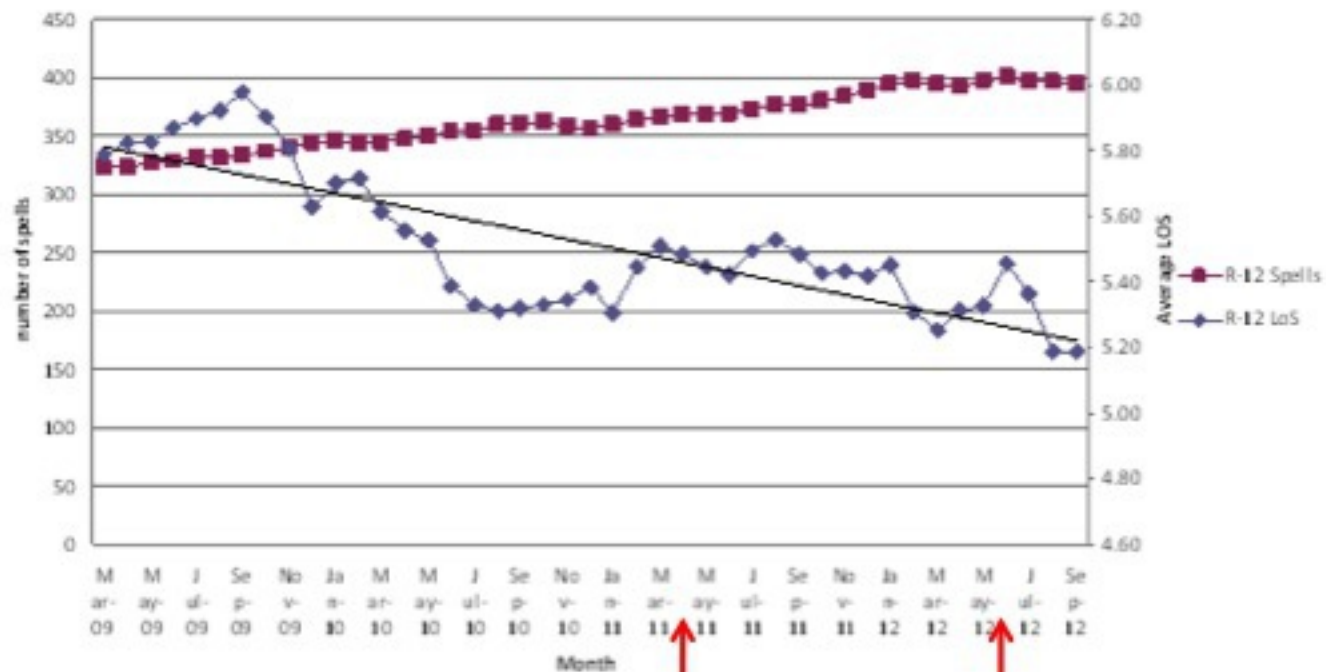


Number of operations performed Feb-Mar 2013

■ Acute team ■ OG
■ HPB ■ Colo-rectal



Non-elective Spells Analysis in General Surgery, Rolling 12 Month Average



one cons'

two cons'

| | total | PS present | emergency |
|---------------------|-------|------------|-----------|
| laparotomies | 51 | 49 | 49 |
| colorectal | | | |
| rt Hemi | 4 | 4 | 4 |
| sub-total | 4 | 4 | 4 |
| defunction' | 3 | 3 | 3 |
| Hartmann's | 6 | 6 | 6 |
| UGI | | | |
| perf DU | 2 | 2 | 2 |
| bleeding DU | 1 | 1 | 1 |
| gastrectomy | 2 | 2 | 2 |
| other | 26 | 24 | 24 |
| trauma | 3 | 3 | 3 |
| | | | |
| hernia | 47 | 42 | 9 |
| cholecystectomy | 103 | 101 | 30 |
| appendicectomy | 42 | 21 | 42 |

| | total | PS present | emergency |
|---------------------|-------|------------|-----------|
| laparotomies | 51 | 49 | 49 |
| colorectal | | | |
| rt Hemi | 4 | 4 | 4 |
| sub-total | 4 | 4 | 4 |
| defunction' | 3 | 3 | 3 |
| Hartmann's | 6 | 6 | 6 |
| UGI | | | |
| perf DU | 2 | 2 | 2 |
| bleeding DU | 1 | 1 | 1 |
| gastrectomy | 2 | 2 | 2 |
| other | 26 | 24 | 24 |
| trauma | 3 | 3 | 3 |
| | | | |
| hernia | 47 | 42 | 9 |
| cholecystectomy | 103 | 101 | 30 |
| appendectomy | 42 | 21 | 42 |

| | total | PS present | emergency |
|---------------------|-------|------------|-----------|
| laparotomies | 51 | 49 | 49 |
| colorectal | | | |
| rt Hemi | 4 | 4 | 4 |
| sub-total | 4 | 4 | 4 |
| defunction' | 3 | 3 | 3 |
| Hartmann's | 6 | 6 | 6 |
| UGI | | | |
| perf DU | 2 | 2 | 2 |
| bleeding DU | 1 | 1 | 1 |
| gastrectomy | 2 | 2 | 2 |
| other | 26 | 24 | 24 |
| trauma | 3 | 3 | 3 |
| | | | |
| hernia | 47 | 42 | 9 |
| cholecystectomy | 103 | 101 | 30 |
| appendectomy | 42 | 21 | 42 |

| | total | PS present | emergency |
|---------------------|-------|------------|-----------|
| laparotomies | 51 | 49 | 49 |
| colorectal | | | |
| rt Hemi | 4 | 4 | 4 |
| sub-total | 4 | 4 | 4 |
| defunction' | 3 | 3 | 3 |
| Hartmann's | 6 | 6 | 6 |
| UGI | | | |
| perf DU | 2 | 2 | 2 |
| bleeding DU | 1 | 1 | 1 |
| gastrectomy | 2 | 2 | 2 |
| other | 26 | 24 | 24 |
| trauma | 3 | 3 | 3 |
| | | | |
| hernia | 47 | 42 | 9 |
| cholecystectomy | 103 | 101 | 30 |
| appendectomy | 42 | 21 | 42 |

UHS early uptake of ASU

UK slow internationally

good for all general surgeons

excellent for trainees

better for patients